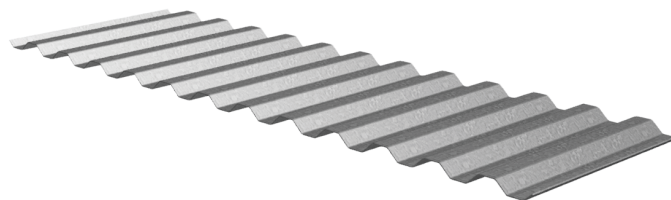
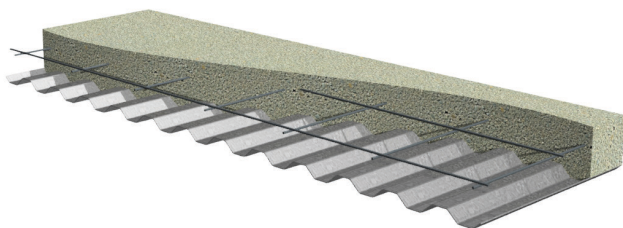
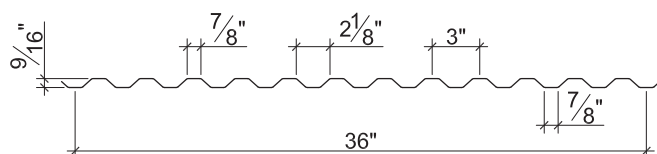


SHALLOW VERCOR® (SV) NON-COMPOSITE & ROOF DECK GRADE 80 STEEL

LRFD



Nominal Dimensions



Section Properties

Deck Gage	Deck Weight w_{dd} (psf)	Base Metal Thickness t (in.)	Yield Strength F_y (ksi)	Effective Moment of Inertia at Service Load $I_d = (2I_e + I_g)/3$		Effective Section Modulus at $F_y = 60$ ksi		Vertical Web Shear ϕV_n (lb/ft)
				I_{d+} (in ⁴ /ft)	I_{d-} (in ⁴ /ft)	S_{e+} (in ³ /ft)	S_{e-} (in ³ /ft)	
26	1.0	0.0179	60	0.013	0.013	0.041	0.043	2268
24	1.3	0.0239	60	0.018	0.018	0.059	0.059	3022
22	1.6	0.0299	60	0.022	0.022	0.073	0.073	3772
20	1.9	0.0359	60	0.027	0.027	0.087	0.087	4521

Design Reactions at Supports Based on Web Crippling, ϕR_n (lb/ft)

Deck Gage	Bearing Length of Webs							
	One-Flange Loading				Two-Flange Loading			
	End Bearing		Interior Bearing		End Bearing		Interior Bearing	
	1 1/2"	2"	1 1/2"	2"	1 1/2"	2"	1 1/2"	2"
26	890	986	1172	1282	819	890	1431	1577
24	1500	1654	2045	2227	1528	1652	2542	2788
22	2244	2466	3131	3396	2444	2632	3934	4297
20	3115	3413	4423	4782	3563	3825	5594	6092

Standard Features

- ASTM A653 SS GR80 with G90
- Standard lengths – 6'-0" to 40'-0"
- IAPMO UES ER-2018 and UL Listed
- Tables conform to ANSI/SDI NC-2017 and RD-2017

Optional Features

- Inquire regarding cost and lead times for:
 - Short cuts < 6'-0"
 - Sheet Lengths > 40'-0"
 - Alternative metallic and painted finishes
- Side-lap Venting

NOTICE: Design defects that could cause injury or death may result from relying on the information in this document without independent verification by a qualified professional. The information in this document is provided "AS IS". Nucor Corporation and its affiliates expressly disclaim: (i) any and all representations, warranties and conditions and (ii) all liability arising out of or related to this document and the information in it.